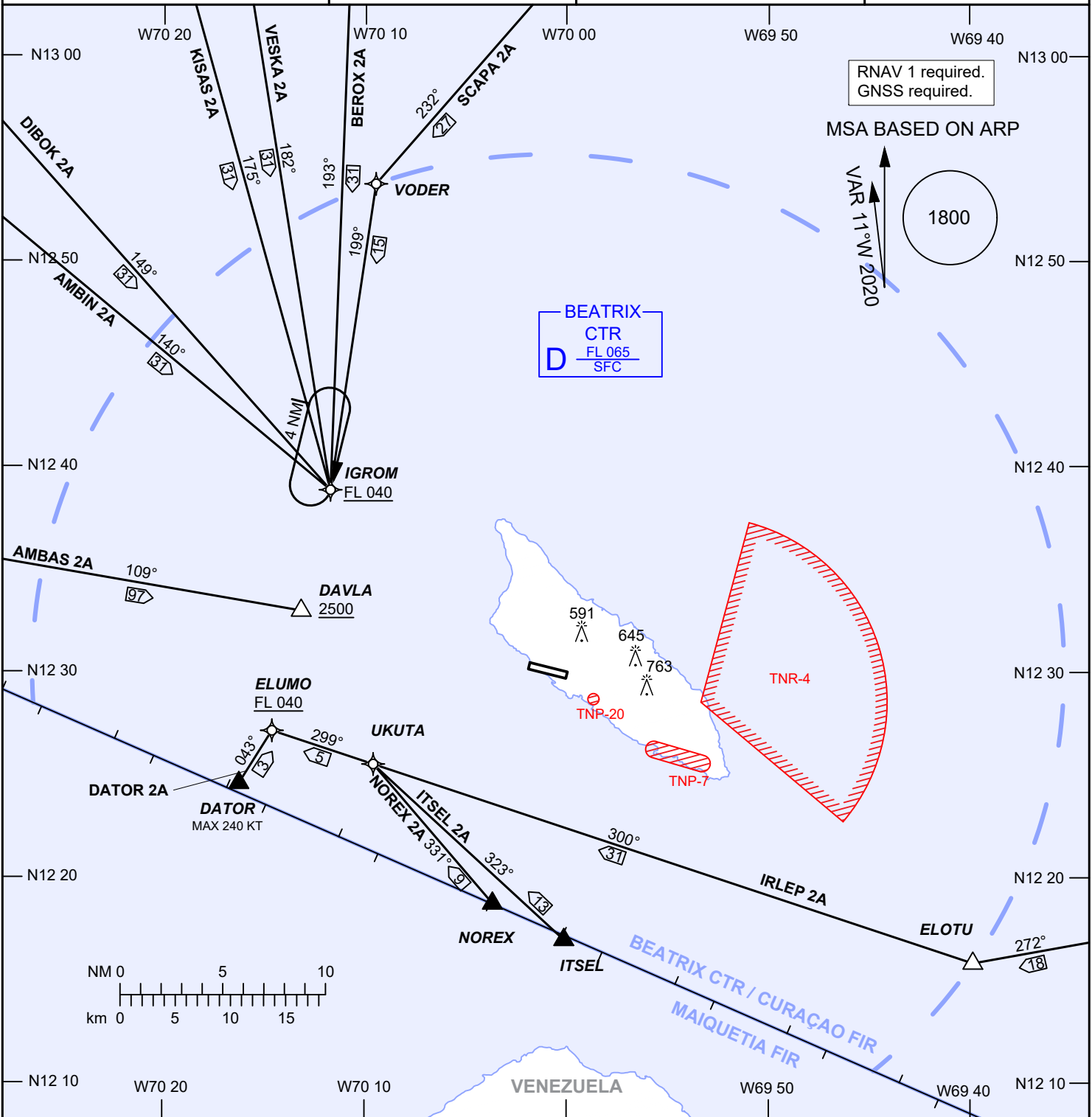


AIP DUTCH CARIBBEAN

| | | | | |
|--|------------------------|-------------|------------|---------------------|
| STANDARD ARRIVAL CHART INSTRUMENT (RNAV) - ICAO | AD ELEVATION: 62 | BEATRIX: | | RWY 11 |
| | TRANS LEVEL: FL 040 | TWR 118.0 | APP 120.9 | REINA BEATRIX INT'L |
| | TRANS ALT: 2500 (2438) | APRON 121.6 | ATIS 132.1 | (TNCA), ARUBA |



1. A request for the RNP RWY 11 approach should be made on first contact with ATC.
2. Altitudes, elevations and heights in feet, distances in nautical miles, bearings are magnetic.

| ICAO STAR DESIGNATORS | | | |
|-----------------------|----------|--------|--------------|
| AMBAS 2A | ITSEL 2A | TNP-7 | GND - 2500 |
| AMBIN 2A | KISAS 2A | TNR-4 | SFC-by NOTAM |
| BEROX 2A | NOREX 2A | TNP-20 | GND - 2500 |
| DATOR 2A | SCAPA 2A | | |
| DIBOK 2A | VESKA 2A | | |
| IRLEP 2A | | | |

CHANGES: Editorial: MAGVAR2020.